



Jordan fishwick

7 Oak Road Lindow Court Park, WA16 7DP
Realistic Offers Considered £99,950



Lindow Court Park Mobberley

Realistic Offers Considered
£99,950



Modernisation required. Offering an opportunity to purchase a two-bedroom park home just outside of Wilmslow in Cheshire. The property would be ideal for buyers looking to downsize while still having access to some of the area's most desirable countryside and village locations. The development is well-maintained and boasts a peaceful setting. The property itself features an entrance hallway, living room, breakfast kitchen, two bedrooms and a bathroom. Externally there is a low maintenance garden.

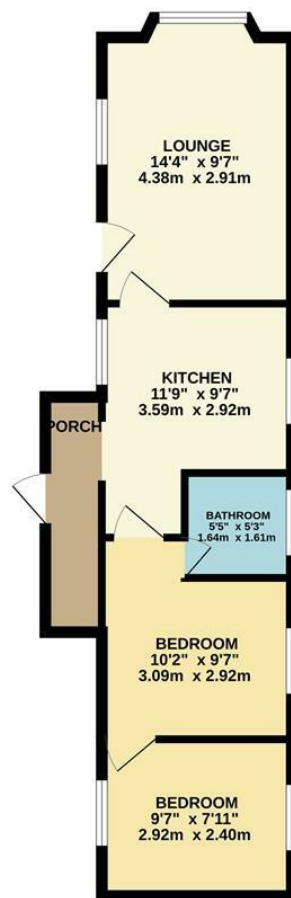
Pitch Fee for 2026 is £205.63 pcm



- Modernisation Required
- Park Home
- Two Bedrooms
- Breakfast Kitchen
- Low Maintenance Gardens



GROUND FLOOR
452 sq.ft. (42.0 sq.m.) approx.



TOTAL FLOOR AREA: 452 sq.ft. (42.0 sq.m.) approx.
Measurements are approximate. Not to scale. Illustrative purposes only.
Made with Metropix ©2025



These particulars are believed to be accurate but they are not guaranteed and do not form a contract. Neither Jordan Fishwick nor the vendor or lessor accept any responsibility in respect of these particulars, which are not intended to be statements or representations of fact and any intending purchaser or lessee must satisfy himself by inspection or otherwise as to the correctness of each of the statements contained in these particulars. Any floorplans on this brochure are for illustrative purposes only and are not necessarily to scale.

Offices at: Chorlton, Didsbury, Disley, Hale, Glossop, Macclesfield, Manchester Deansgate, Manchester Whitworth Street, New Mills, Sale, Wilmslow and Withington

36-38 Alderley Road, Wilmslow SK91JX
01625 532000

wilmslow@jordanfishwick.co.uk
www.jordanfishwick.co.uk